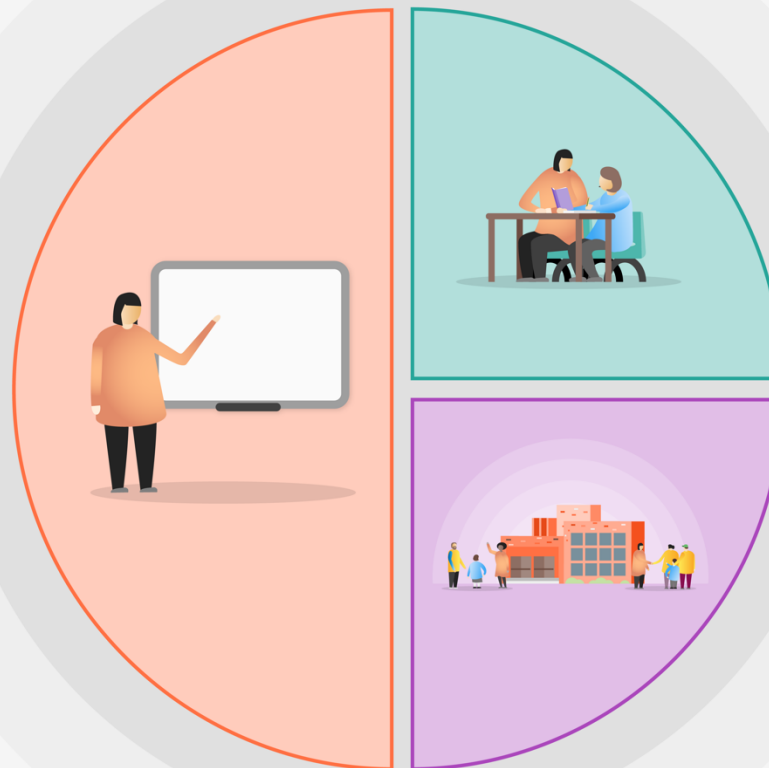


1 Teaching

- Children are assessed in the Advent 1 Term and performance data is analysed against historical data to identify where pupils attainment has slipped due to the Covid extended school closure
- Classroom based Quality First Teaching.
- In the key areas of reading, including phonics, writing including SPAG and maths the previous academic year's curriculum is to be incorporated to ensure the content is secure.
- Whole-class reading approach underpinned by clearly defined formative assessment practices.
- Concrete resources are available in all maths lessons throughout school.
- All work throughout the school continues to be underpinned by our Catholic Gospel Values and Mission Statement.



2 Targeted academic support

- Children who's attainment has been identified as having slipped to receive targeted small group and one to one interventions primarily based around the key areas as identified in section one.
- Targeted academic support to be provided by a specific Covid-19 catch-up qualified teacher.

3 Wider strategies

- Forest School and active encouragement of outdoor learning.
- Reflective journals.
- All year groups to be in regular communication with families though appropriate platforms.
- Healthy Happy Active initiative.
- 5 Ways to Wellbeing (NHS)